



# ABOUT US

---

QUADRO INTERNATIONAL is a company with international quality standards certificate ISO 9001.

Company based in Kyiv, Ukraine, is the developer and manufacturer of the SHERP all-terrain vehicle, that has no analogues in the world in terms of its capabilities and characteristics.

The first SHERP all-terrain vehicle was produced and presented in 2012. The creation of SHERP is based on a unique and patented development technology.

It had no competitors in cross-country ability and maneuverability. Almost instantly becoming the embodiment of reliability and infallibility, the vehicle gained popularity among thrill-seekers from different countries.

In 2016, the British TopGear auto show called SHERP “a tank for two”.



# ABOUT US

---

It took us 20 years to develop a reliable amphibian all-terrain vehicle that can move on any surface and overcome the most difficult natural obstacles: eminences and hills with a slope of 40 degrees, floating on the water with a cargo (water basins, marshes, ice) and ground surfaces (stone fields, sand, snow, fallen timber). In partnership with WFP, SHERP fights hunger in several countries around the world.

The SHERP all-terrain vehicle is a reliable assistant for specialists who overcome natural difficulties as a part of their profession: geologists, oil workers, rescue agents, fishermen, hunters, extreme drivers, and travelers.

SHERP is a technology company that helps customers to overcome their problems. SHERP actively develops a new niche, while remaining the market leader in all-terrain vehicles.



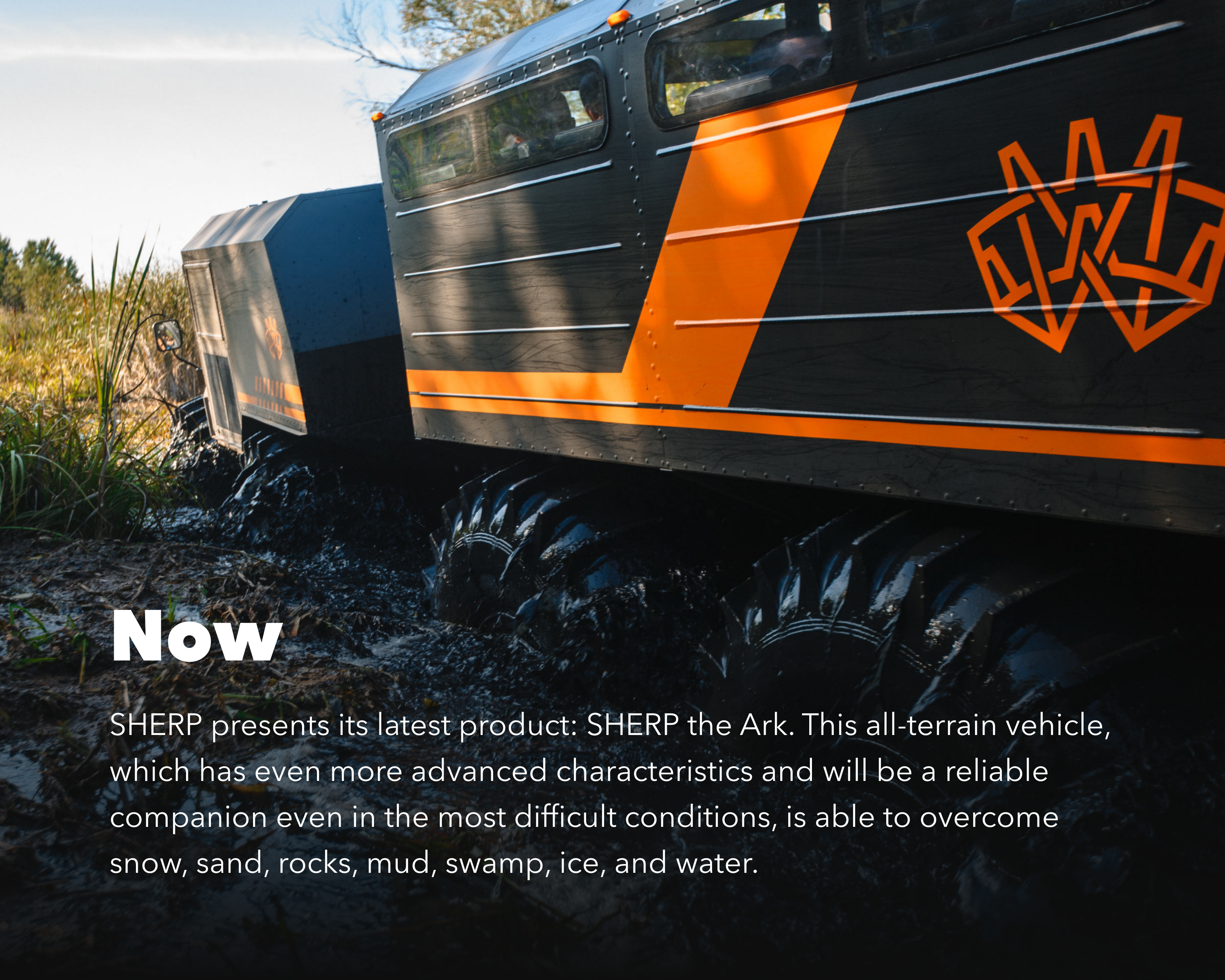
# SHERP the Ark

## Overview and capabilities

Inspired by the success and capabilities of the new all-terrain vehicle for solving problems faced by existing and potential customers, having absorbed all the experience of the first model and its best characteristics, design engineers continued to search for optimal solutions, technologies, and materials for the new model that exceeds the original one. The reaction of the first SHERP owners



and the feedback of the potential buyers helped to expand the design boundaries. That has helped SHERP engineers to understand what additional functions of the vehicle will be in demand and in which direction the project should be developed, focusing on cross-country ability, carrying capacity, adaptability to different situations and problems, as well as simplicity and reliability in operation.



# Now

SHERP presents its latest product: SHERP the Ark. This all-terrain vehicle, which has even more advanced characteristics and will be a reliable companion even in the most difficult conditions, is able to overcome snow, sand, rocks, mud, swamp, ice, and water.

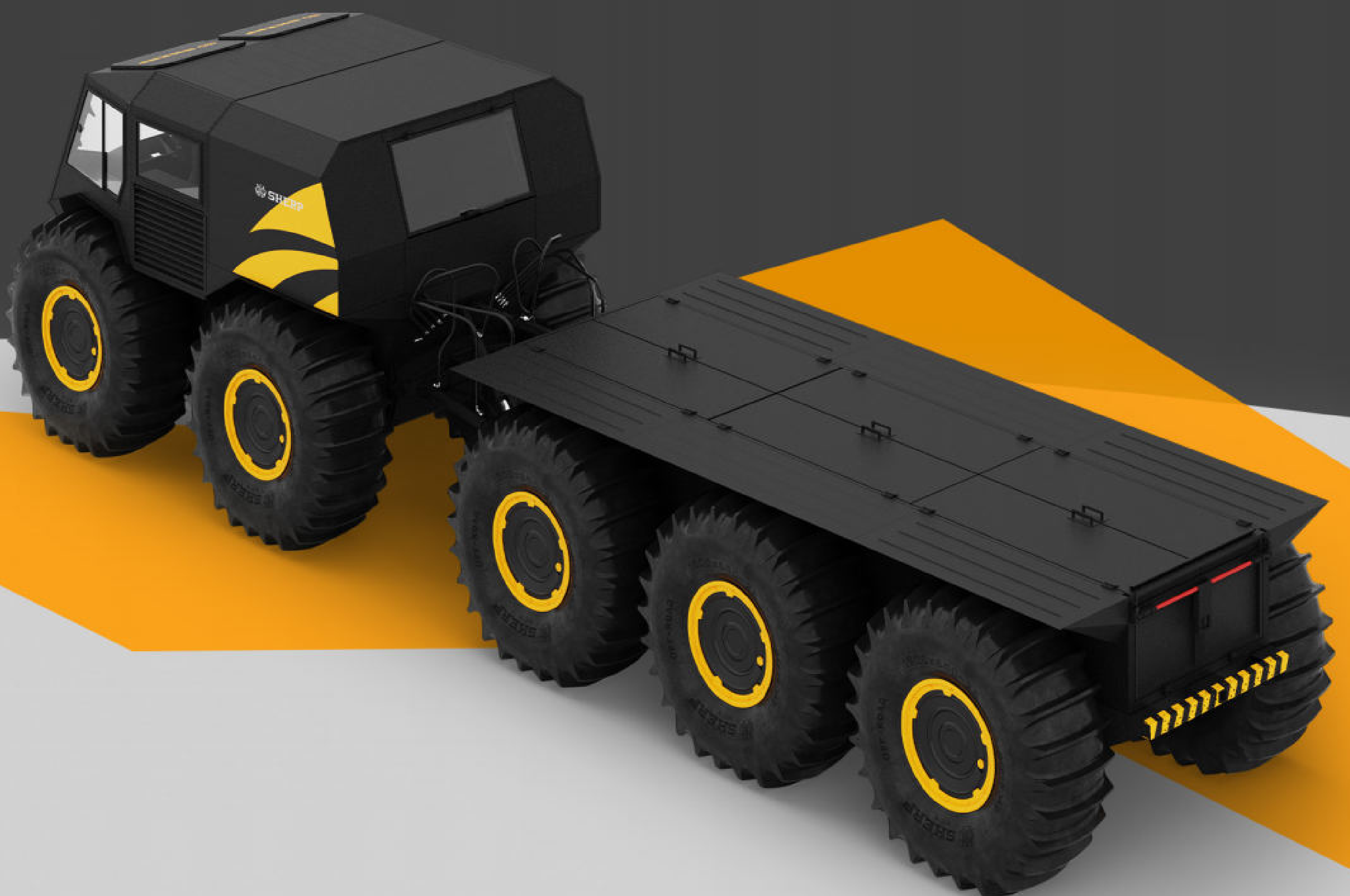
## There is nothing like **SHERP the Ark in the world:**

- ✓ Travels on grass, forest, sand, peat, moor, marsh, beach, dunes, rocks, scree, gravel, snow, ice
- ✓ Swims in pond, lake, river, river delta, sandbanks, shore, intertidal coasts, ocean and sea coast, shoals, frozen waters
- ✓ Climbs out of the water onto ice
- ✓ Overcomes 5-feet high obstacles and
- ✓ Trench crossing 6.5-feet
- ✓ Traverses 40-degree (88%) slopes
- ✓ Transports 7500 lb

# Basic models

## Universal platform

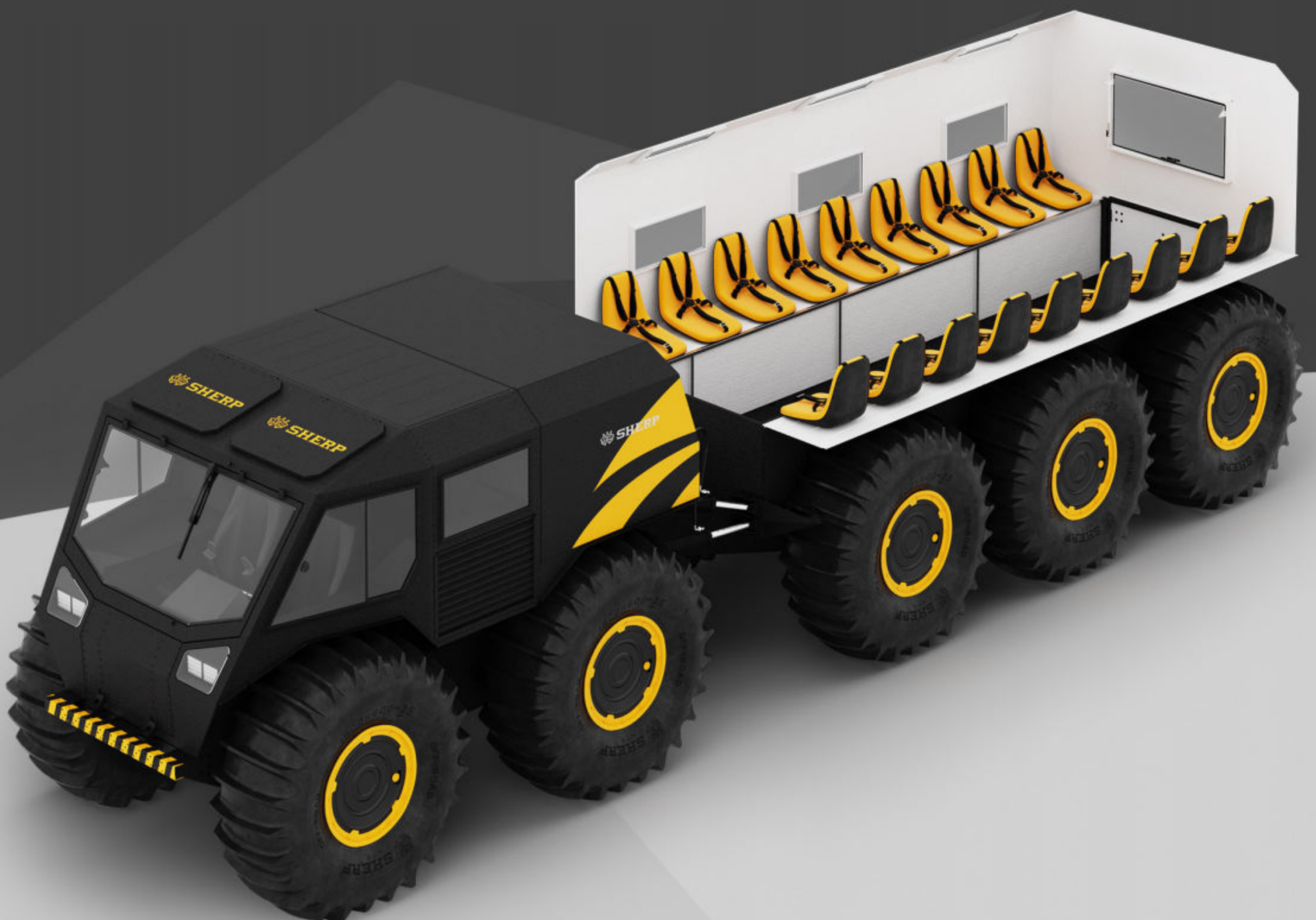
The SHERP the Ark all-terrain vehicle with a universal platform is ideal when you need to transport cargo to or from places that usual platforms can't pass. The machine is equipped with everything necessary to secure a load, and high throughput will allow you to successfully complete any operation. Crossing a river or boulders on the way is not a problem. Everything will be delivered safe and sound.



## People mover (carrier)

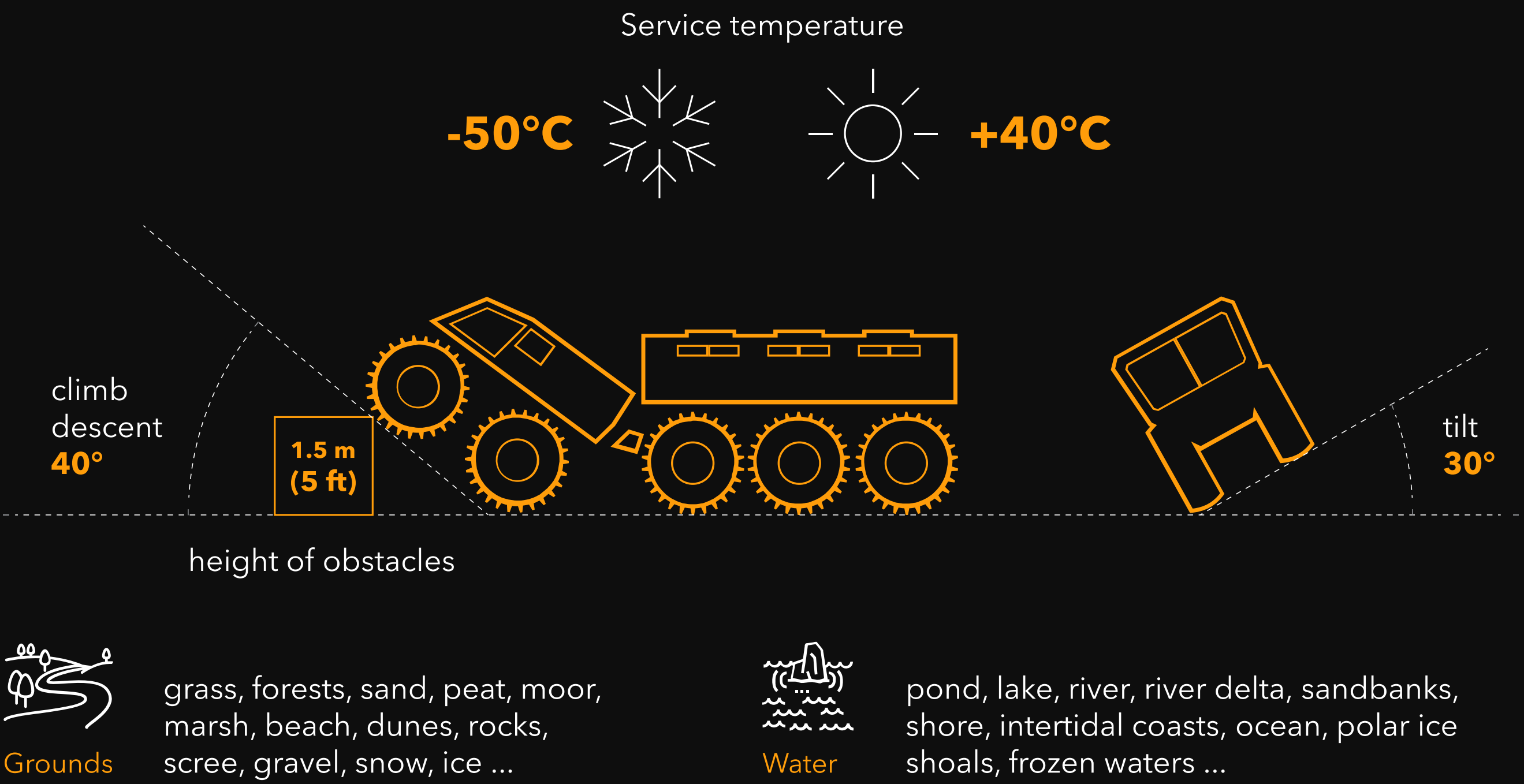
The people mover version of SHERP the Ark is designed to carry groups of people in the most extreme conditions. This powerful machine can be used in rescue operations for victims of natural disasters, such as floods or earthquakes. It will also be easier to organize extreme tours for thrill seekers. The passengers will be as safe as the driver.

Another obvious advantage of the passenger model is the ability to take on board up to 21 passengers (3 in the front section and 18 in the rear section) plus the driver. Transporting or saving people will require less time and effort. All the main characteristics of SHERP the Ark are the same: the machine is capable of traversing grass, forest, sand, peat, moor, marsh, beach, dunes, rocks, scree, gravel, snow, ice, and climbing from water to ice.



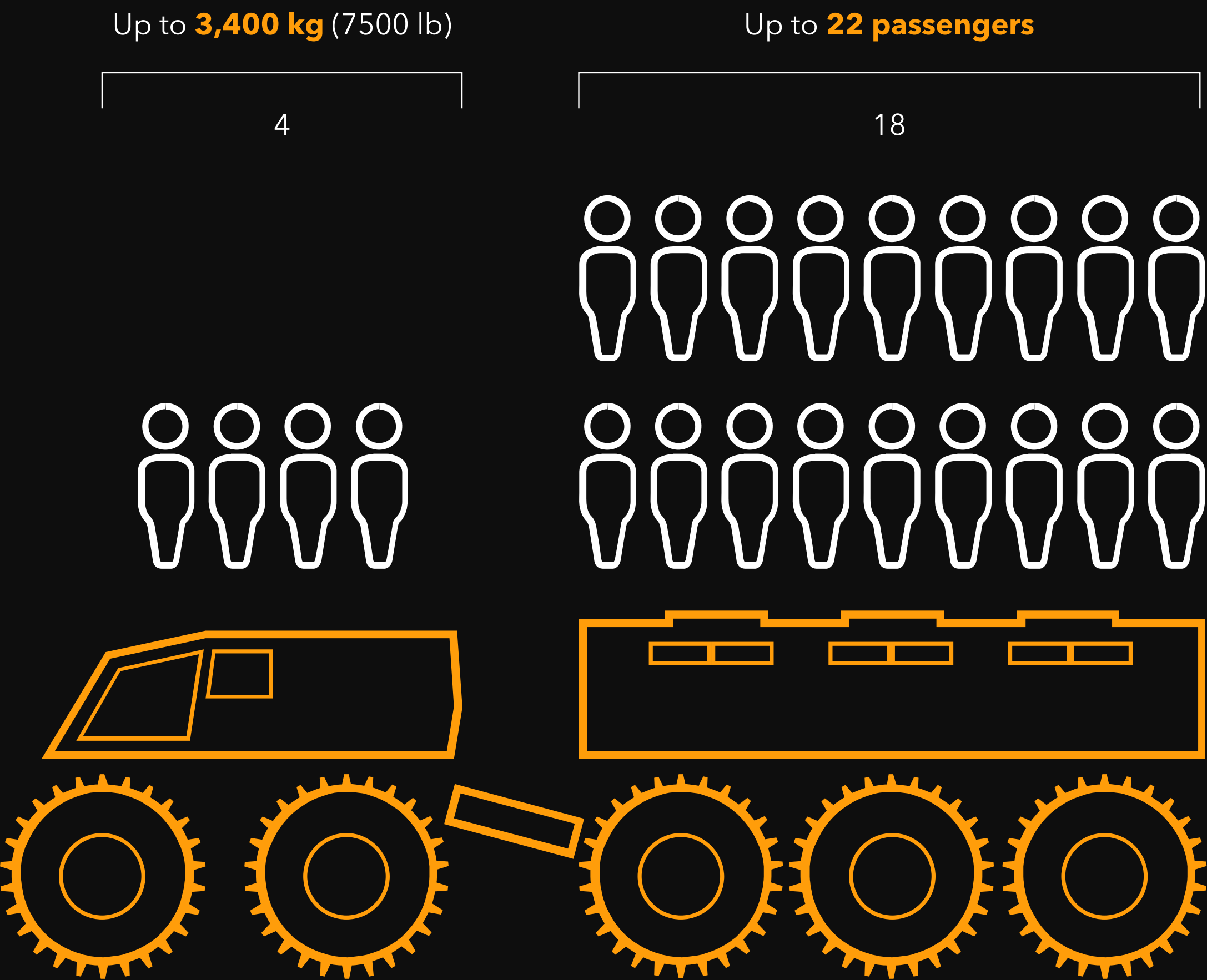


# All season, all weather, all terrain



## High loading capacity

Haul all the equipment your team needs





# Safety

- ✓ Digital Inclinator with sound and light alarm for critical tilt angles of the rear section
- ✓ 3 points safety seat belts
- ✓ Back up camera
- ✓ Back-up alarm

## Engine

The Ark engine provides high dynamic performance in its class with the most demanding environmental requirements. The diesel engine provides high torque and fuel efficiency with a low level of noise and vibration. The engines are adapted for work in any climate zone, which makes it possible to operate the all-terrain vehicle both in hot desert conditions or on a cold glacier.

## Model: Doosan D24 Tier 4 Final

- ✓ 55,4 kW (74,3 hp)
- ✓ 206ft/lbs. of Torque @1600 RPM
- ✓ High Pressure Common Rail Fuel Injection
- ✓ Full ECM
- ✓ Intercooled
- ✓ Westgate type Turbo
- ✓ Externally Cooled EGR
- ✓ DOC Aftertreatment

# Pneumocirculating suspension

Pneumocirculating suspension is a unique patented solution that ensures smooth and even movement of the ATV on any surface.

The suspension design does not include any springs, shock absorbers, struts and other conventional elements. Fewer parts, higher reliability, fewer breakdowns, lower repair costs.



# Tire inflation system and adjustable tire pressure

The specific design of the pneumocirculating suspension allows quick inflation of tires.

This feature allows quickly changing tire pressure on the move, properly adapting it to various types of surfaces for the most efficient travel mode.



# Tubeless ultra-low pressure tires

SHERP the Ark tires are patented as well. They are tubeless ultra-low pressure and special tread pattern make them perfect for overcoming any obstacle.

The reliability of tires is achieved through the use of high-quality materials (special-composition rubber and cord) and advanced production technologies.

Boasting impressive strength and durability, they remain lightweight and elastic. The tires feature high level of adhesion to ground and enable to reach water speed of up to 6 km/h (3.7Mph).

The tires are self-inflated using exhaust gases.

## Fuel efficiency

SHERP the Ark consumes 8 to 12 liters of diesel fuel per hour on average (2 - 3 Gph). Fuel consumption depends on the type of surface.

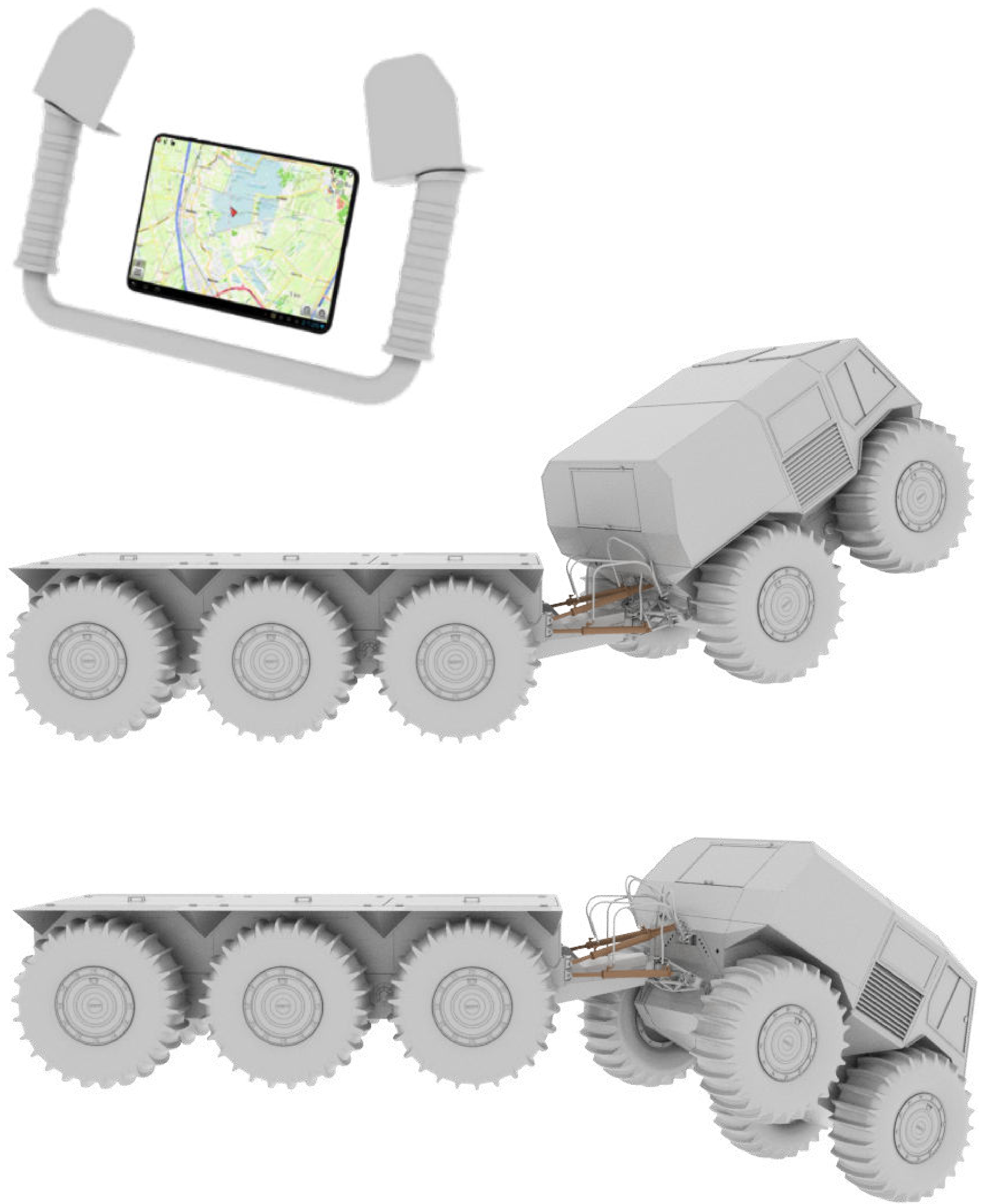
## Large fuel autonomy

Fuel tank volume of 240 L (63 gal) plus 10 fuel canisters (58 L [15 gal] of each canister) gives you possibility to drive more than 82 hours of autonomy and 24hr non-stop running just with main fuel tank.



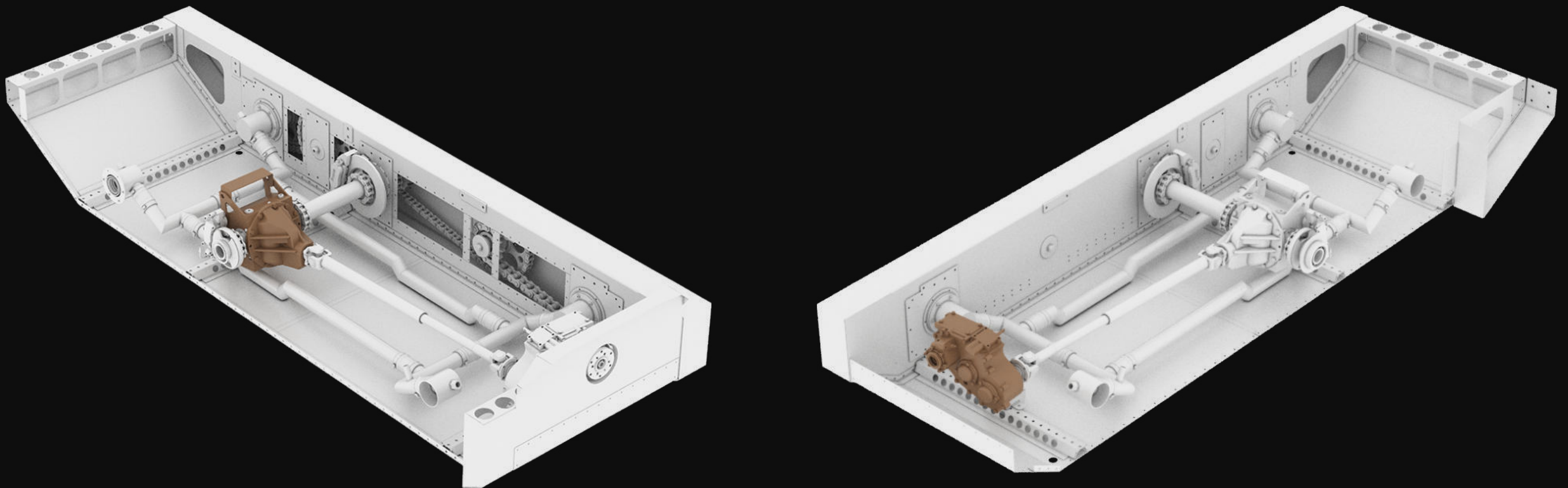
# Multi-power articulated steering

The new SHERP the Ark is equipped with multi-power articulated (3-axis) steering. This allows it to overcome multi-level obstacles: the front section of the all-terrain vehicle rises and twists, so the car easily climbs up. The machine is controlled intuitively with a steering wheel.



# Equipped to travel unobstructed by terrain

The vehicle is equipped to travel unobstructed by terrain. The main axle pairs of the front and rear sections have locks on the center differentials.



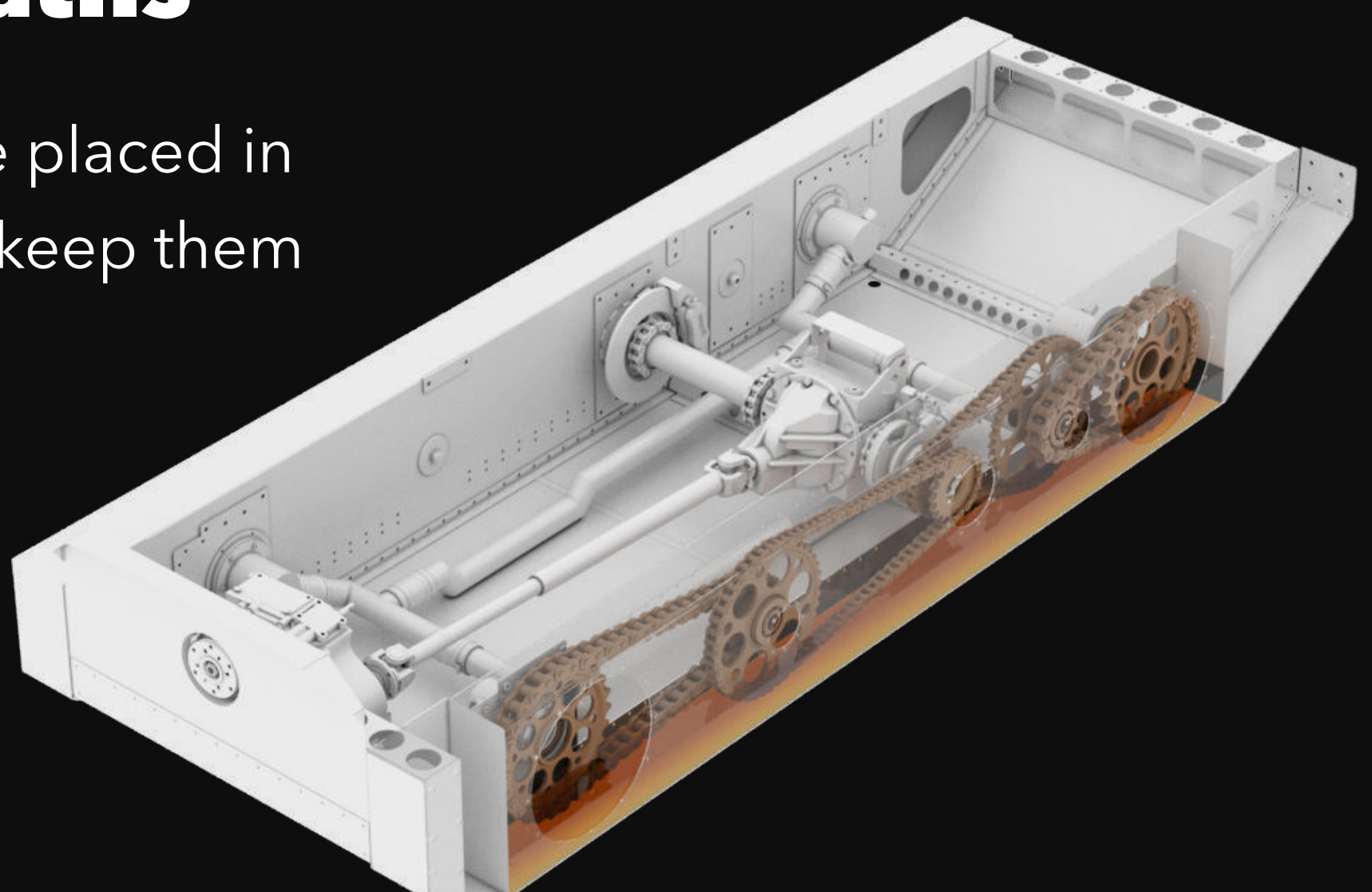
SHERP the Ark is equipped with a transfer box that, at critical moments, allows you to significantly increase the tractive torque of the wheels, including a lower gear. If necessary, you can also disable the drive to the front section.

## Independended tire pressure regulation and emergency shut-off damaged wheel

In case of damage to one of the wheels, a solution is easily at hand. A separate tire inflation system allows you to change tire pressure depending on the relief or the location of the load on the rear section of the vehicle. In this way, it is possible to let the air out of the damaged wheel and continue moving.

## Chains in oil baths

Chains of transmission are placed in closed oil baths that help keep them in use much longer.



# SHERP the Ark (Universal platform)

Body type (first section)	Hardtop
Body material	Steel (frame and bottom, hot dripped galvanized) and aluminium (cabin)
Steering	Steering wheel, multi-power articulated (3-axis)
Tire size	1600 x 600 x 25 (63 x 23 x 25 in)
Type of tyres	Tubeless, extra-low pressure
Suspension	Pneumatic circulating, separate adjustment for front and rear sections
Maximum speed (at the top-gear)	Up to 30 km/h (18.6 mph)
Minimum speed (at the low-gear)	2 km/h (1.2 mph)
Engine model	Doosan D24
Fuel type	diesel
Emission control	Stage 5 / Tier-4-final
Engine DOC (Diesel Oxidation Catalyst)	DOC+DPF/DOC only
Fuel consumption	8-12 L/h (2-3 gal/h)
Engine displacement	2.4 L
Cylinder count	4
Max engine power	55,4 kW (74,3 hp)
Max engine torque	320 Nm
Generator Performance	140 A
Fuel tank volume	180 L (63 gal) (30 L [8 gal] in a front section, 150 L in rear section)
Capacity of additional fuel canisters	10 x 58 L (15 gal)
Gearbox	mechanical, 5-speed
Dry weight	4300 kg
Loading capacity	3400 kg (400 kg in front section and 3000 kg in rear section)
Towing capacity	4000 kg
Cabin internal volume	5.9 m3
Rear space internal volume	3.1 m3
Overall internal volume	9 m3
Maintenance interval (first/regular)	250 hours (first 50 hours)
Parking brake system	Mechanical handbrake

**Base Model Includes:**

Cabin module ROPS	3-point seatbelt for driver and passenger
Backup battery	Glove boxes
Rear view camera	Additional fuel tank rims
LED hi-beam and low-beam	


# SHERP the Ark (People mover)

Body type	Hardtop
Body material	Steel (frame and bottom, hot dripped galvanized) and aluminium (cabin)
Steering	Steering wheel, multi-power articulated (3-axis)
Tire size	1600 x 600 x 25 (63 x 23 x 25 in)
Type of tyres	Tubeless, extra-low pressure
Suspension	Pneumatic circulating, separate adjustment for front and rear sections
Maximum speed (at the top-gear)	Up to 30 km/h (18.6 mph)
Minimum speed (at the low-gear)	2 km/h (1,2 mph)
Engine model	Doosan D24
Fuel type	diesel
Emission control	Stage 5 / Tier-4-final
Engine DOC (Diesel Oxidation Catalyst)	DOC+DPF/DOC only
Fuel consumption	8-12 L/h (2-3 gal/h)
Engine displacement	2.4 L
Cylinder count	4
Max engine power	55,4 kW (74,3 hp)
Max engine torque	320 Nm
Generator Performance	140 A
Fuel tank volume	180 L (63 gal) (30 L [8 gal] in a front section, 150 L in rear section)
Capacity of additional fuel canisters	10 x 58 L (15 gal)
Gearbox	mechanical, 5-speed
Dry weight	5382 kg
Loading capacity	2000 kg (400 kg (880 lb) in front section and 1600 kg in rear section)
Towing capacity	4000 kg
Cabin internal volume	5.9 m3
Rear space internal volume (without seats)	14.2 m3
Overall internal volume	20.1m3
Maintenance interval (first/regular)	250 hours (first 50 hours)
Parking brake system	Mechanical handbrake

**Base Model Includes:**

Cabin and passenger module ROPS	3-point seatbelt for driver and passenger
Backup battery	Glove boxes
Rear view camera	Additional fuel tank rims
LED hi-beam and low-beam	

# UNITED STATES ENVIRONMENTAL PROTECTION AGENCY 2019 MODEL YEAR CERTIFICATE OF CONFORMITY WITH THE CLEAN AIR ACT

	UNITED STATES ENVIRONMENTAL PROTECTION AGENCY 2019 MODEL YEAR CERTIFICATE OF CONFORMITY WITH THE CLEAN AIR ACT	OFFICE OF TRANSPORTATION AND AIR QUALITY ANN ARBOR, MICHIGAN 48105	
Certificate Issued To: <b>Doosan Infracore Co., Ltd.</b> (U.S. Manufacturer or Importer) Certificate Number: <b>KD1CL02.4LEA-003</b>	Effective Date: 12/04/2018 Expiration Date: 12/31/2019	 Byron J. Bunker, Division Director Compliance Division	Issue Date: 12/04/2018 Revision Date: N/A
Model Year: 2019 Manufacturer Type: Original Engine Manufacturer Engine Family: KD1CL02.4LEA	Mobile/Stationary Indicator: Both Emissions Power Category: 37<=kW<56 Fuel Type: Diesel After Treatment Devices: Diesel Oxidation Catalyst Non-after Treatment Devices: Electronic/Electric EGR - Cooled		
<p>Pursuant to Section 111 and Section 213 of the Clean Air Act (42 U.S.C. sections 7411 and 7547) and 40 CFR Parts 60 and 1039, and subject to the terms and conditions prescribed in those provisions, this certificate of conformity is hereby issued with respect to the test engines which have been found to conform to applicable requirements and which represent the following engines, by engine family, more fully described in the documentation required by 40 CFR Parts 60 and 1039 and produced in the stated model year.</p> <p>This certificate of conformity covers only those new compression-ignition engines which conform in all material respects to the design specifications that applied to those engines described in the documentation required by 40 CFR Parts 60 and 1039 and which are produced during the model year stated on this certificate of the said manufacturer, as defined in 40 CFR Parts 60 and 1039.</p> <p>It is a term of this certificate that the manufacturer shall consent to all inspections described in 40 CFR 1068 and authorized in a warrant or court order. Failure to comply with the requirements of such a warrant or court order may lead to revocation or suspension of this certificate for reasons specified in 40 CFR Parts 60 and 1039. It is also a term of this certificate that this certificate may be revoked or suspended or rendered void <i>ab initio</i> for other reasons specified in 40 CFR Parts 60 and 1039.</p> <p>This certificate does not cover engines sold, offered for sale, or introduced, or delivered for introduction, into commerce in the U.S. prior to the effective date of the certificate.</p> <p>The actual engine power may lie outside the limits of the Emissions Power Category shown above. See the certificate application for details.</p>			

